

Hospice

- *Provides caring, compassionate care to the terminally ill and their families.*
- *Has a dedicated team consisting of physicians, nurses, social workers, dietitians, clergy, health aides and volunteers working together to provide individualized, devoted care.*
- *Provides physical therapy, occupational therapy and speech therapy if appropriate.*
- *Offers 24 hour on-call services.*



To find out more information about the Hospice program and to see if it is right for you or someone you know contact:

Barb Swinson, RN, BSN
Hospice Coordinator

at

Clay County Health Department
601 E. 12th Street
Flora, IL 62839
Phone: (618) 662-4406
Or
800-544-4406

Web site: www.healthdept.org



Serving Clay County and the
Surrounding Counties of:
Marion, Wayne, Richland, Jasper,
Edwards, Wabash and Effingham

Clay County Health Dept, Hospice Program



What Does
CCHDH
Stand For?

Caring
Committed
Helpful
Devoted
Hearth-
Professionals
& Volunteers

HOSPICE PHILOSOPHY

Hospice is not all about death, it is about living and helping those with a terminal illness to truly live until they die. It is about helping the families and loved ones of the terminally ill to go on living and celebrate the life of their loved one and recognize the gift that was bestowed upon them by the beautiful life of their loved one.

Death is not about saying good-bye...it is just a temporary separation with the hope that we will one day be together again.

Hospice Care....

- Provides medically managed pain and symptom control in the patient's home or nursing home.
- Has a dedicated, caring group of individuals to help assist the patient and family that includes clergy (whether your own or ours), physicians, nurses, social workers, health aides and volunteers.
- Offers support for the spiritual, emotional and physical needs of the patient and family.
- Pays for all medications that are related to the terminal illness.
- Helps relieve the financial stress on family by paying for equipment /supplies.
- Assists with bereavement follow-up for up to one year after death of patient.
- Provides 24 hour on-call service.

Clay County Health Department Hospice

When quantity of life is not an option...
Quality is what counts!!!!!!!

When all curative and diagnostic measures are exhausted and comfort is the primary concern.

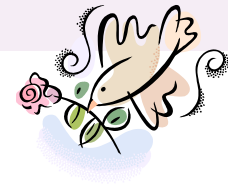
Hospice benefits include....

- Palliative care (comfort) in the patient's home rather than curative care.
- Medications for pain relief and symptom management of disease.
- A dedicated, caring group of trained professionals in hospice care.
- Dietary guidance.
- Personal care.
- Emotional and spiritual care.
- Short-term inpatient care, including respite care at surrounding area hospitals
- Bereavement up to one year for the family.
- Support groups for the bereaved.
- Familiar surrounds.
- Help patient and family deal with feelings of helplessness and hopelessness.



Guidelines for Admission:

- Live in the service area.
- Consent of the attending physician.
- Life expectancy of 6 months or less.
- Accept palliative care (comfort) rather than curative care.
- Accept the philosophy of allowing death to occur naturally without extraordinary interventions.
- Arrangements for a capable and willing caregiver to serve in the home



The Clay County Health Department Hospice Program does not discriminate in admission to programs or treatment of employment in programs and activities in compliance with the Illinois Human Rights Act, the Age Discrimination in Employment Act, the U.S. and Illinois constitutions. If you feel you have been discriminated against in regards to race, color, creed, sex, age, national origin or handicap, contact Jeff Workman, Administrator at :
(618) 662-4406 or 800-544-4406